



Farmers Electric Cooperative

A Touchstone Energy Cooperative

301 N. Hillcrest
Sulphur Springs, TX 75482

2000 I-30 E
Greenville, TX 75402

108 W. Marble
Wylie, TX 75098



Thursday, November 8, 2018

Office of Hopkins County Judge
PO Box 288
Sulphur Springs TX 75483

Farmers Electric Cooperative Member: Christopher Blake
Service Order Number: 1809002617

Greetings:

Farmers Electric Cooperative, Inc. is requesting permission to construct electrical power distribution facilities which will cross County Road CR 3513 which is located, 1540 ft east of CR 3512 in Hopkins County , Texas.

Site location map and construction sketches are enclosed. The construction sketch details the proposed work. All road crossings will have a minimum vertical clearance of 22 feet.

If you have any questions, please contact me at any time.

Sincerely,

Matthew Walker

Project Coordinator
mwalker@farmerselectric.coop
Phone 903-441-1368

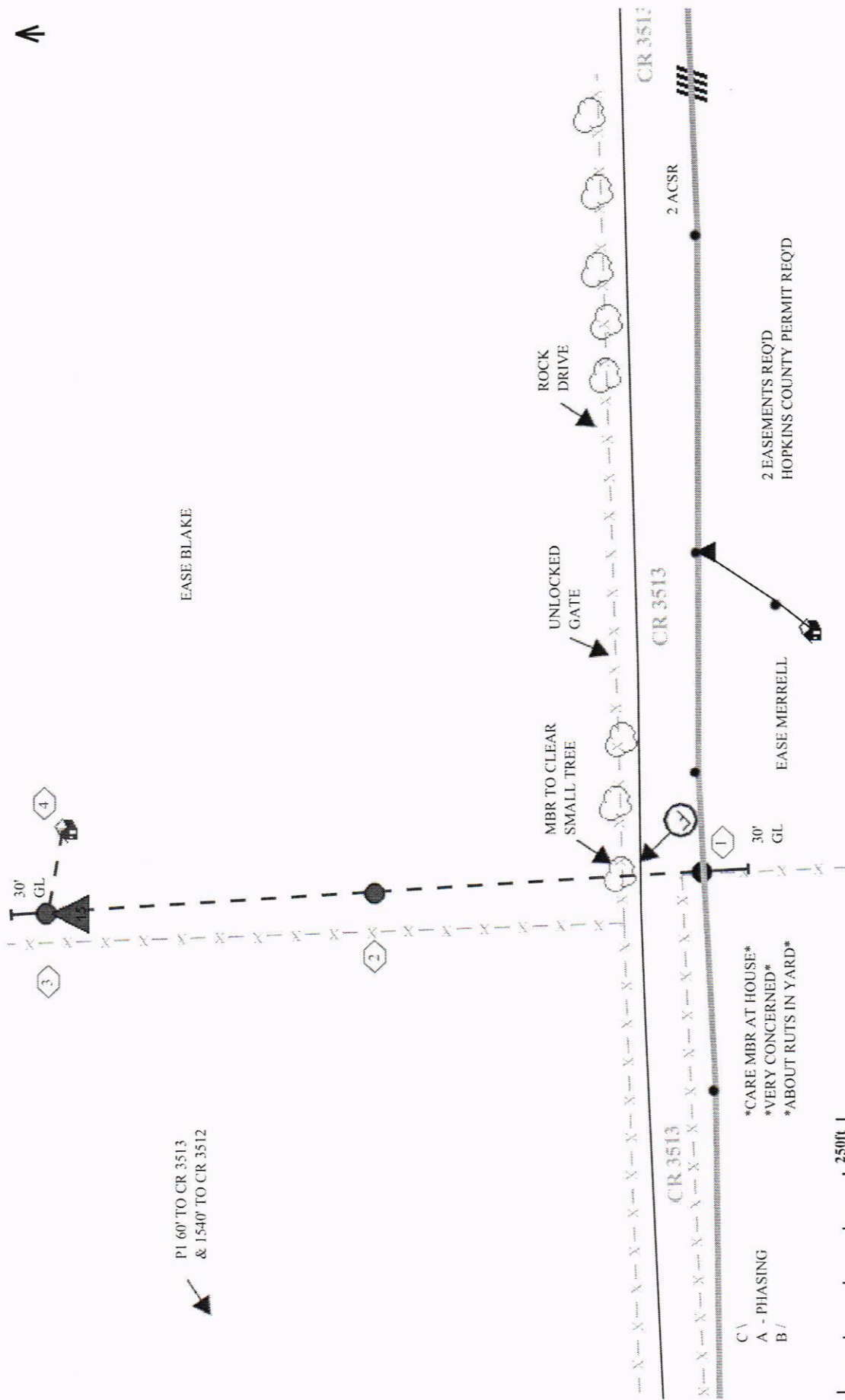
Submitted by Brandon Darrow
bdarrow@farmerselectric.coop
Field Engineering Coordinator

Enclosures

County Approval Section:

Approved: Denied:

Authorized Signature: *Wade Bentley* Date: 11-9-18

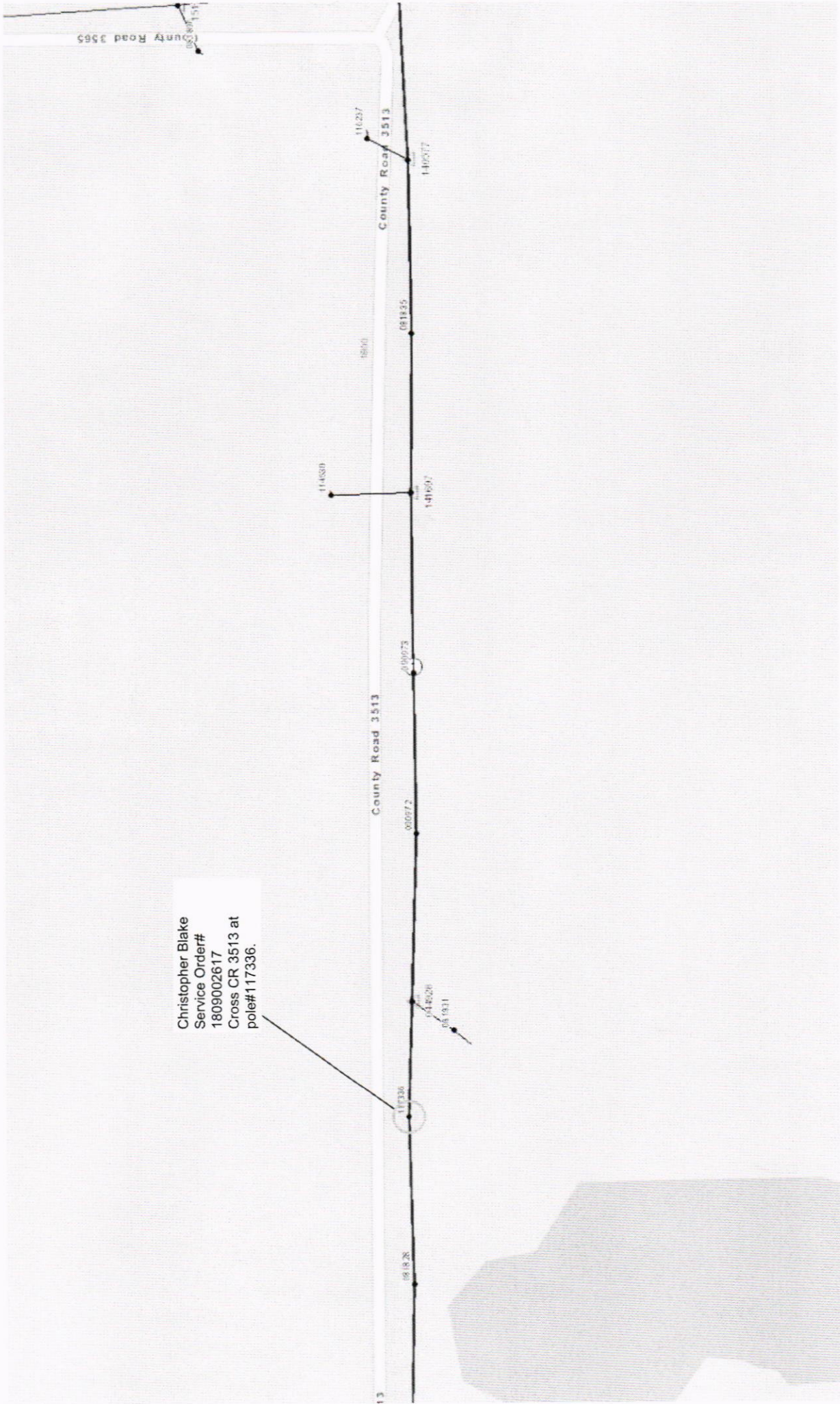


P1 60' TO CR 3513
& 1540' TO CR 3512

- *CARE MBR AT HOUSE*
- *VERY CONCERNED*
- *ABOUT RUTS IN YARD*

250ft

C \
A - PHASING
B /



Christopher Blake
Service Order#
1809002617
Cross CR 3513 at
pole#117336.